

DEV-34: Writing Your Own Plug-ins for OpenEdge® Architect – A Developer's Experience

Cornelius Scheffel, Johannes Imhof



PRO ALPHA

Writing Your Own Plug-ins for OpenEdge® Architect – a Developers Experience

Cornelius Scheffel & Johannes Imhof

Exchange 08

1 DEV-34: Writing Your Own Plug-ins for OpenEdge® Architect – A Developer's Experience

Who we are





Cornelius Scheffel
Vice President Systems and Services
proALPHA Consulting AG
Grünwalderstrasse 29-31
D-42657 Solingen
Telefon: +49 (212) 2494-720
Telefax: + 49 (212) 2494-729
E-Mail: cornelius.scheffel@proalpha.de
<http://www.proalpha.com>



Johannes B. Imhof
Lead Tool Developer
proALPHA Consulting AG
Grünwalderstrasse 29-31
D-42657 Solingen
Telefon: +49 (212) 2494-720
Telefax: + 49 (212) 2494-729
E-Mail: johannes.imhof@proalpha.de
<http://www.proalpha.com>

Exchange 08

2 DEV-34: Writing Your Own Plug-ins for OpenEdge® Architect – A Developer's Experience

Agenda



- The Company proALPHA
- The proALPHA Development Process
- Create a new Development Project – a proALPHA OpenEdge Architect Plug-in
- How we wrote that Plug-in
- Other useful proALPHA OpenEdge Architect Plugins
- Future Plans

Exchange 08

3 DEV-34: Writing Your Own Plug-ins for OpenEdge® Architect – A Developer's Experience

DEV-34: Writing Your Own Plug-ins for OpenEdge® Architect – A Developer's Experience

Cornelius Scheffel, Johannes Imhof

Agenda

PRO ALPHA

- The Company proALPHA
 - The proALPHA Development Process
 - Create a new Development Project – a proALPHA OpenEdge Architect Plug-in
 - How we wrote that Plug-in
 - Other useful proALPHA OpenEdge Architect Plugins
 - Future Plans

Exchange 08

4 DEV-34: Writing Your Own Plug-ins for OpenEdge® Architect – A Developer's Experience

proALPHA – What we do

PRO ALPHA

- ERP-System Producer for medium-sized customers
- Approximately 400 employees (about 130 developers)
- 1500 customer installations
- Consulting, Software Development & Customization

Exchange 08

5 DEV-34: Writing Your Own Plug-ins for OpenEdge® Architect – A Developer's Experience

International Company

PRO ALPHA

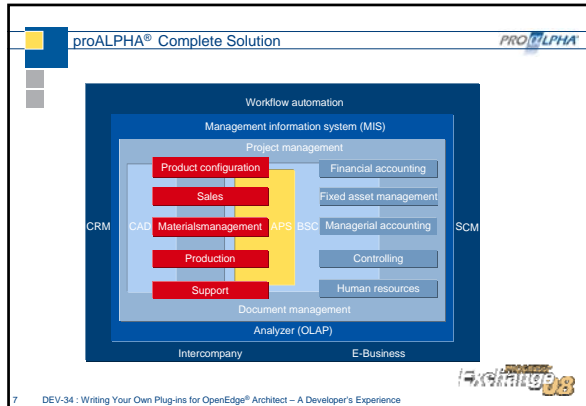
Legend:
■ Subsidiaries or partners
■ Installations or companies

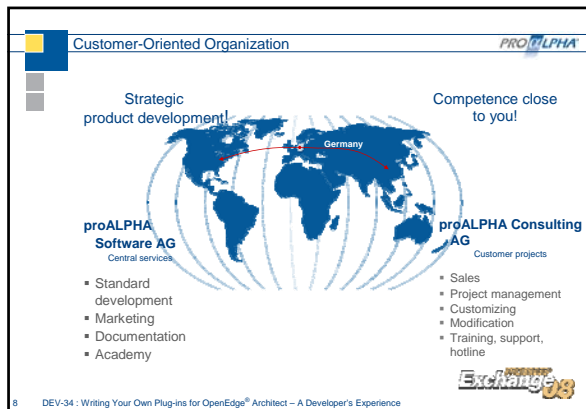
Exchange 08

6 DEV-34: Writing Your Own Plug-ins for OpenEdge® Architect – A Developer's Experience

DEV-34: Writing Your Own Plug-ins for OpenEdge® Architect – A Developer's Experience

Cornelius Scheffel, Johannes Imhof







Agenda

- The Company proALPHA
- The proALPHA Development Process
- Create a new Development Project – a proALPHA OpenEdge Architect Plug-in
- How we wrote that Plug-in
- Other useful proALPHA OpenEdge Architect Plugins
- Future Plans

10

DEV-34: Writing Your Own Plug-ins for OpenEdge® Architect – A Developer's Experience

The proALPHA Development Process

11

DEV-34: Writing Your Own Plug-ins for OpenEdge® Architect – A Developer's Experience

Tools supporting the Development Process

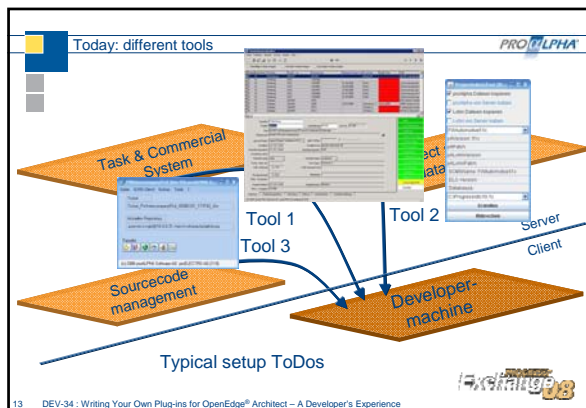
- PaT – Process Management Tool to manage the whole development process
- SCMS – Source Code Management System for software versioning
- ProjectAdminTool – Setup a project on a developer machine

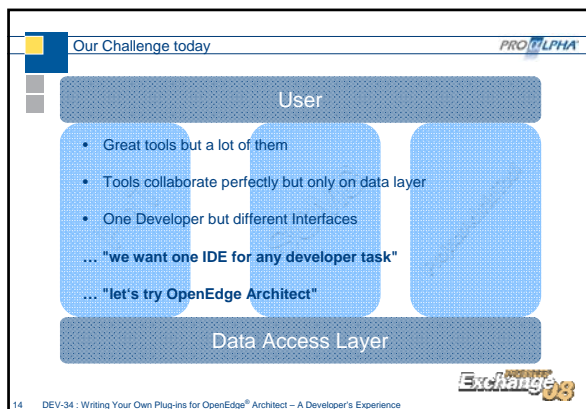
12

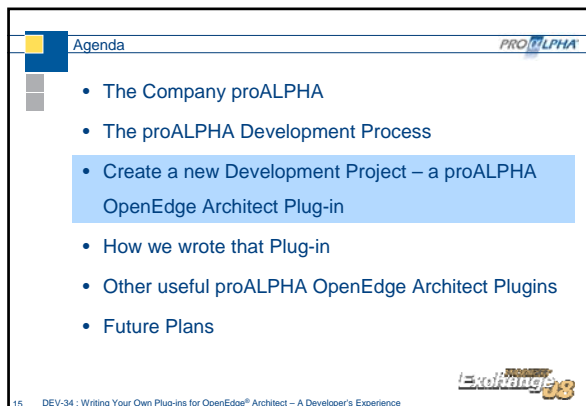
DEV-34: Writing Your Own Plug-ins for OpenEdge® Architect – A Developer's Experience

DEV-34: Writing Your Own Plug-ins for OpenEdge® Architect – A Developer's Experience

Cornelius Scheffel, Johannes Imhof





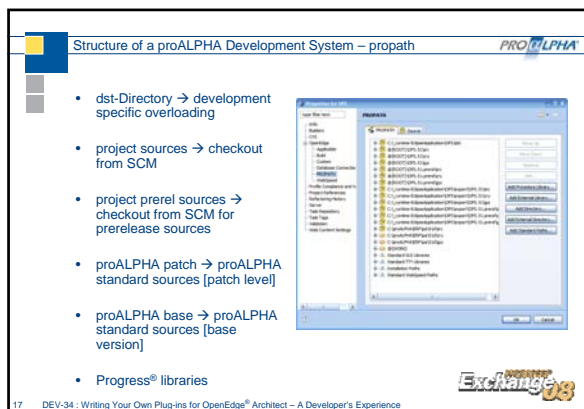


DEV-34: Writing Your Own Plug-ins for OpenEdge® Architect – A Developer's Experience

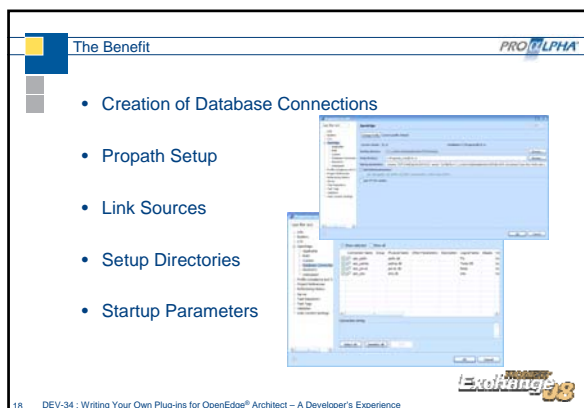
Cornelius Scheffel, Johannes Imhof



16 DEV-34: Writing Your Own Plug-ins for OpenEdge® Architect – A Developer's Experience



17 DEV-34: Writing Your Own Plug-ins for OpenEdge® Architect – A Developer's Experience



18 DEV-34: Writing Your Own Plug-ins for OpenEdge® Architect – A Developer's Experience

Agenda

- The Company proALPHA
- The proALPHA Development Process
- Create a new Development Project – a proALPHA OpenEdge Architect Plug-in
- How we wrote that Plug-in
- Other useful proALPHA OpenEdge Architect Plugins
- Future Plans

19 DEV-34: Writing Your Own Plug-ins for OpenEdge® Architect – A Developer's Experience

Using Eclipse „New Plug-in Wizard“

Read a Book

Use Eclipse Plug-in Wizard

Create Standard Plug-in Project

20 DEV-34: Writing Your Own Plug-ins for OpenEdge® Architect – A Developer's Experience

Eclipse Design Pattern (MVC)

21 DEV-34: Writing Your Own Plug-ins for OpenEdge® Architect – A Developer's Experience

Disclaimer

PRO ALPHA

- OpenEdge Plugins do not have a stable API
- Interfaces may change when you change the OpenEdge Version

Exchange 08

22 DEV-34: Writing Your Own Plug-ins for OpenEdge® Architect – A Developer's Experience

PRO ALPHA

```
/* Create database */
conn = new DatabaseConnectionProfile(dbname);
conn.setAutoStartServer(true);
conn.setAutoShutdownServer(true);
conn.setServerParameters("-db " + Integer.toString(offset) +
    + selectedProject.getPath().getAbsolutePath() + ".dbtype.ge"
    + ".db -H localhost -S " + Integer.toString(offset));
conn.setLogicalName(dbtype.getLogicalName());
conn.setHost("localhost");
conn.setService(Integer.toString(offset));
conn.setPhysicalName(dbtype.getPhysicalName() + ".db");
conn.setCheckered(true);
conn.setConnected(true);
```

Exchange 08

23 DEV-34: Writing Your Own Plug-ins for OpenEdge® Architect – A Developer's Experience

the Code

PRO ALPHA

```
/* Create database */
conn = new DatabaseConnectionProfile(dbname);
conn.setAutoStartServer(true);
conn.setAutoShutdownServer(true);
conn.setServerParameters("-db Demo.db -H localhost -S " +
    Integer.toString(offset) + " -B 2000");
conn.setLogicalName(dbtype.getLogicalName());
conn.setHost("localhost");
conn.setService(Integer.toString(offset));
conn.setPhysicalName(dbtype.getPhysicalName() + ".db");
conn.setCheckered(true);
conn.setConnected(true);
```

Exchange 08

24 DEV-34: Writing Your Own Plug-ins for OpenEdge® Architect – A Developer's Experience

PaT Connector – Plug-in

PaT

State-Free AppServer (.p)

Java OpenClient (.java)

Implementation myLyn Extension Points

PaT – Connector

myLyn – Plug-in

Eclipse IDE

- PaT := Task Management System proALPHA Consulting AG
- Using myLyn (task focused Eclipse interface)
- myLyn supplies extension points to integrate an own task management system
- Communication between Java™ OpenClient™ and state-free AppServer™

28

DEV-34: Writing Your Own Plug-ins for OpenEdge® Architect – A Developer's Experience

PRO ALPHA

PaT TaskManager AppServer

Enter your PaT Connect ID

PaT Connect ID

PaT Connect ID

PaT Connect ID

PaT Connect ID

PaT Connect ID

29

DEV-34: Writing Your Own Plug-ins for OpenEdge® Architect – A Developer's Experience

Agenda

The Company proALPHA

The proALPHA Development Process

Create a new Development Project – a proALPHA OpenEdge Architect Plug-in

How we wrote that Plug-in

Other useful proALPHA OpenEdge Architect Plug-ins

Future Plans

30

DEV-34: Writing Your Own Plug-ins for OpenEdge® Architect – A Developer's Experience

Progress Exchange 2008
8-11 June, 2008

PRO ALPHA®

Future Plans

PRO ALPHA

OpenEdge Architect

PaT

SCMS

AdminTool

Templates

Exchange 08

31 DEV-34: Writing Your Own Plug-ins for OpenEdge® Architect – A Developer's Experience

Summary

PRO ALPHA

- A Setup of a new project can be difficult
 - Automating accelerates your setup
 - Automating reduces user errors

→ **Message**
OpenEdge Architect is a very powerful tool and it is even more powerful if you invest some time in developing plug-ins that fit to your development process

Exchange 08

32 DEV-34: Writing Your Own Plug-ins for OpenEdge® Architect – A Developer's Experience

For more Information ...

PRO ALPHA

- <http://www.proalpha.com>
- <http://www.psdn.com>
- <http://www.eclipse.org>
- EMF: Eclipse Modeling Framework, Second Edition, Dave Steinberg; Frank Budinsky; Marcelo Paternostro; Ed Merks, Addison Wesley Professional, February 01, 2008
- Eclipse. Building Commercial Quality Plug-ins: Building Commercial Quality Plug in (Eclipse), Eric Clayberg; Dan Rubel, Addison Wesley Longman, Juni 2004

Exchange 08

33 DEV-34: Writing Your Own Plug-ins for OpenEdge® Architect – A Developer's Experience



