

DEV-38: Progress on the Street
Wim van der Ham

PROGRESS SOFTWARE

DEV-37: Progress on the Street

Any time, Any place, Anywhere

Wim van der Ham
Director, Worldwide IT Solutions

Exchange 2008


Agenda

- The customer & project
- Integration Register office
 - Progress® V9.1 and OpenEdge® 10.1
- Social Porter
 - Smart phones, PDA's and OpenEdge
- Show information
 - WebSpeed® and Google™ Maps

Exchange 2008

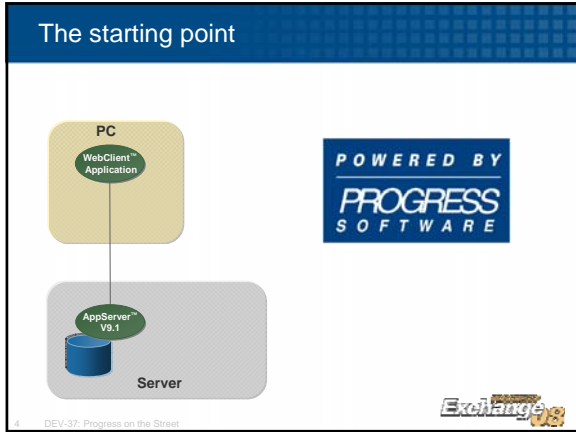
Customer and Project

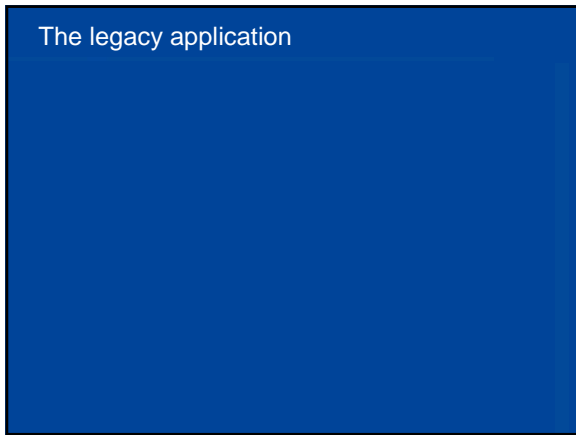
- City of Milano
- Winner of Expo 2011
- Social Services Department
- Legacy GUI ADM2
WebClient – AppServe – App...
- Started in 2001



Exchange 2008

DEV-38: Progress on the Street
Wim van der Ham





- ### Agenda
- Integration*
- The customer & project
 - Integration Register office
 - Progress V9.1 and OpenEdge 10.1
 - Social Porter
 - Smartphones, PDA's and OpenEdge
 - Show information
 - WebSpeed and Google Maps
- Exchange 2008
- DEV-37: Progress on the Street

DEV-38: Progress on the Street
Wim van der Ham

New Business Requirement

Integration with Register office

- "All persons that access a social service should be verified against the register office"
- Register office contains official data of all residents of Milano
- Access to the register office is available through web services
- Web services are easy in OpenEdge
- Migrate application to OpenEdge?



DEV-37: Progress on the Street

Progress V9.1 and OpenEdge 10.1

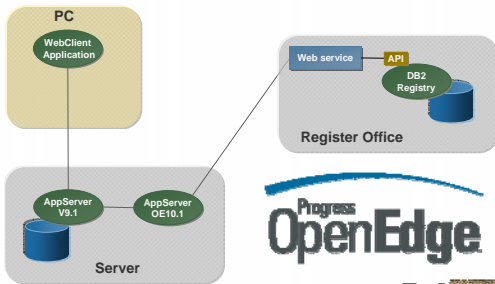
How to reconcile business pull and technology push

- Existing AppServer - WebClient application
 - Progress V9.1
 - Client PC's with **NT** and **Windows 2000**
- Migration to OpenEdge on clients not possible ☹
- Installation of OpenEdge on server **is** possible ☺
- Setup OpenEdge AppServer on the server
 - Bridge between V9.1 and outside world
 - Both incoming and outgoing!



DEV-37: Progress on the Street

Building the bridge



DEV-37: Progress on the Street

DEV-38: Progress on the Street
Wim van der Ham

Co-existence of Progress 9 and OpenEdge 10

- No need to upgrade clients
- Make sure you separate ports in OpenEdge
 - Adminservice
 - AdminServerPlugins.properties file
 - [PluginPolicy.Progress.AdminServer]
 - port=20393
 - Name server
 - Rename NS1 to e.g. NS10
 - Ubroker.properties file
 - [NameServer.NS10]
 - portNumber=5172



10 DEV-37: Progress on the Street

Quick guide: How to call a Web Service?

- Get the WSDL (Web Service Description Language)
- Run it through the Progress WSDL Analyzer
- Open the created documentation (index.html)
- Copy & Paste
- Run and done
 - Well, almost
- Parse XML or load directly in ProDataSet™



11 DEV-37: Progress on the Street

Demo: How to call a Web Service

Demo



12 DEV-37: Progress on the Street


DEV-38: Progress on the Street
Wim van der Ham

Agenda

Integration

- The customer & project
- Integration Register office
 - Progress V9.1 and OpenEdge 10.1
- **Social Porter**
 - Smartphones, PDA's and OpenEdge
- Show information
 - WebSpeed and Google Maps

13 DEV-37: Progress on the Street



A new service: Social Porter

- After an experimental period, the city of Milano implements a new service:
 - the Social Porter
- It's an itinerary service where social assistants monitor areas of the city, listen to requests and problems of the habitants, facilitate access to specific services and assist habitants to e.g. hospital visits
- Every Social Porter has a smart phone which should be used to register the activity in real-time

14 DEV-37: Progress on the Street




Smartphones, PDA's and OpenEdge 10.1

- No Progress on Windows Mobile ☹
- Create mobile application
- We developed in Java™ NetBeans with J2ME
- Data exchange with Web services
 - This time we are delivering

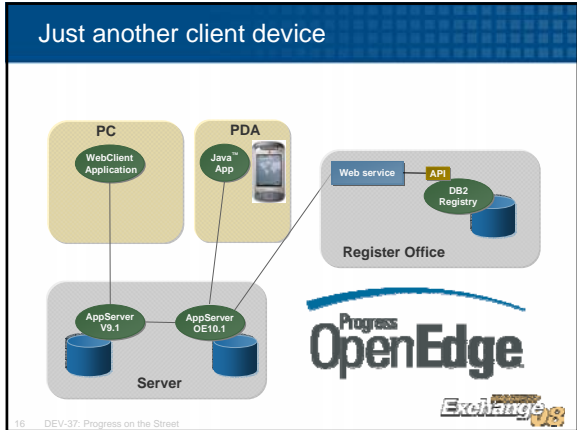


15 DEV-37: Progress on the Street



DEV-38: Progress on the Street

Wim van der Ham



- ### Things to watch out for
- Java <> Progress
 - Get external expertise
 - Check, double check JVM on Smartphone
 - If connectivity is no problem → Stateless
 - Keep all information on server
 - “Guide” PDA with data flow from server
 - J2ME has few data types
 - When in doubt, use character
- 17 DEV-37: Progress on the Street

- ### Quick Guide: Delivering Web Services
- Write your business logic in the ABL as usual
 - Make sure your procedures are stand-alone
 - Use proxy generator to create .wsm file
 - Deploy file under Web service Adapter
 - Deploy r-code on AppServer
- 18 DEV-37: Progress on the Street

Demo: Delivering Web services

Demo




19 DEV-37: Progress on the Street

Agenda

Integration between WebSpeed® and Google™ Maps


- The customer & project
- Integration Register office
 - Progress V9.1 and OpenEdge 10.1
- Social Porter
 - Smartphones, PDA's and OpenEdge
- Show information
 - WebSpeed and Google Maps



20 DEV-37: Progress on the Street

WebSpeed and Google Maps

- Google Maps is perfect for geographical data
- I'm sure you've all used it for searching
- But how to draw our own maps with markers?
- It's fast, it's free and it's (fairly) easy



21 DEV-37: Progress on the Street

What do you need for a Google Map?

- A Google Maps API key
- Concepts of the Maps API
- The complete Maps API Reference
 - <http://code.google.com/apis/maps/>



22 DEV-37: Progress on the Street

Geocoding

- Google Maps puts markers using coordinates
- Coordinates consist of longitude and latitude
- How to get them?
- Geocode an address
- Part of the API of Google Maps



23 DEV-37: Progress on the Street

Demo: Geocoding

Demo



24 DEV-37: Progress on the Street

DEV-38: Progress on the Street
Wim van der Ham

Integrating WebSpeed and Google Maps

- Build web pages for layout
- Separate gets for data (in XML format)
- Supplied by WebSpeed



25 DEV-37: Progress on the Street

Demo: Integrating WebSpeed & Google Maps

Demo



26 DEV-37: Progress on the Street

Integration WebSpeed and WebClient



27 DEV-37: Progress on the Street

DEV-38: Progress on the Street
Wim van der Ham



